



The Revealer



Vol. XIV No. V

ÉIRE PHILATELIC ASSOCIATION
(International)

July-September, 1964

Whole No. 79 ~~78~~ 79

Issued Quarterly

John J. Walsh, Editor



THOM HALF CROWN STAMP
S.G. 44 Scott 36

*Rialtas 12.4mm [na hÉireann
Sealadac 15.1mm] 21.4mm.*

Rev. John Brennan C.C.

Recently my good friend Bill Kane sent me a stamp (photo above) for my observations. The stamp belongs to a Swedish collector who is interested in Irish stamps. He purchased this stamp in an Irish collection, and was attracted to this stamp by its deep shade, so much so he sent it to Bill Kane for an opinion, and Bill sent it to me.

This overprint resembles the Thom (five-line) S.G. 44 which were the Bradbury Wilkinson and the stamp was a grey-brown shade. The stamp sent for my inspection was a deep brown shade, De La Rue printing. The printing of the De La Rue Half Crown stamps ceased in 1918, four years before the overprints were first issued. After my examination I made the following notes:

Rialtas

"R" with narrow turned up tail, should have a squat tail.

"t" with open and narrow end to tail, point jutting out, should be a squat end.

COMPARISON OF LETTERING

BOGUS

THOM PRINTING

R ← t ←

R t

e l o

e l o

Irish Philatelic Association

(INTERNATIONAL)



PRESIDENT-----Fred E. Dixon
15 Terenure Road, East, Rathgar
Dublin 6, Ireland.

VICE PRESIDENT -- Joseph E. Foley
1825 Cromwood Road, Baltimore 34, Md.

SECRETARY-TREASURER ----- G.P. Roberts
1716 West Alpine Ave., Stockton, Calif.

EDITOR OF THE REVEALER - John J. Walsh,
4 Ferris Avenue, Utica, New York

ASSOCIATE EDITOR: Rev. Eugene Doherty,
330 North Westmore Ave., Villa Park, Ill.

ASSOCIATION ATTORNEY --- Lorin L. Kay,
P.O.Box 489, Richland Centre, Wisc.

E.P.A. EUROPEAN DIRECTOR - M.J. Giffney
22 East Road, Dublin 3, Ireland.

PUBLIC RELATIONS DIRECTOR - Wm. Hickey,
96 Georgia Ave., Providence, Rhode Is.

FOR SUBSCRIPTIONS AND BACK COPIES OF
THE REVEALER. Write to Mr. William P.
Hickey, at the above address. Price of
back copies 35¢ each.

SECRETARY'S QUARTERLY REPORT

New Members:

- # 402 H.O. Kennedy
100 Magnolia Drive
Cleveland, Ohio
- # 403 Morton Noble Jr.
1702 Cliff Drive
Santa Barbara, California
- # 404 William T. Mc Caw
368 Grand Street
Newburgh, New York
- # 405 Bernard R. Glennon
1107 North Circle Drive
Whittier, California

ADVERTISEMENTS

NEW ISSUES BRIT. COLS. WANT LISTS
IRELAND A SPECIALTY

Wallace Smith

P.O. BOX 97
OCEANSIDE, CALIF. 92056

E.P.A. #371

STAMPS FOR EVERY COLLECTOR
MEMBER - ABDA, ATA, PTS

Darned few Ireland in stock but
scads of others from the British area.
Also general foreign. Album Service,
Bill Kiepora, E.P.A. # 173, Soledad 19
584 California.

POSTAL STATIONERY PACKET WRAPPERS

by F. E. Dixon

Most items of postal stationery
are sold in packets, contained in
wrappers, specially printed. In-
creases in price have sometimes been
shown by overprinting and during the
paper shortage of World War II some
wrappers were defaced and then re-
printed with different details on
the reverse of the paper.

Below are listed some of the
prices charged, and it will be seen
that the prices have gone up by
rather more than the increase in
postage, especially in the case of
registration envelopes.

1. Envelopes

Size A	1927	11 for 2s.
	1936	11 for 1s.10d
	1940	11 for 2s.
	1942	10 for 2s.3½d
	1946	12 for 3s.
	1953	12 for 3s.6d.
	1962	12 for 4s.6d.

Size C (2d)	1927	14 for 2s.6d.
	1936	" "

Size C (½d)	1927	18 for 1s.
-------------	------	------------

2. Registration Letters

	Size F	Size G
1927	12 for 5s.9d.	12 for 6s.
1942	12 for 6s.6d.	12 for 6s.9d.
1944	12 for 6s.6d.	
1949	12 for 8s.	12 for 8s.6d.
1954	12 for 10s.6d.	12 for 11s.
1958	12 for 13s.6d.	12 for 14s.
1962	12 for 14s.6d.	12 for 15s.

	Size H	Size K
1927	12 for 6s.6d.	6 for 3s.9d.
1942	12 for 7s.	6 for 4s.1½d.
1944	12 for 7s.3d.	6 for 4s.9d.
1949	12 for 9s.	6 for 5s.3d.
1954	12 for 11s.6d.	6 for 6s.6d.
1958	12 for 15s.6d.	6 for 8s.9d.
1962	12 for 16s.6d.	6 for 9s.3d.

3. Postcards

1924	(1½d)	?
1925	(1d)	10 for 1ld.
1942	(1½d)	10 for 1s.5d.
1949	(2d)	10 for 1s.10d.
1956	(2d)	10 for 2s.1d.

(continued on page 589)

Sealadac

"E" with tail jutting out past the eye, should be stumpy and in line with the point of the eye.

"l" has the round of the tail too narrow, should be more open.

"o" top of the d too long, should be more squat.

hEireann

BOGUS

h é i r e a n n
Small e

THOM PRINTING.

hÉ i r e a n n

"h" is too long in the legs. "E" is too small, should be in capital type, the top of the E should be the same height as the h. Accent over the first "E", too short and stumpy. "e" has a pointed tail, should be squat. "R" with the tail turned up at its end should be straight down. "n" too long, and wrong shape - they have rounded feet, The Thom printing has flat feet.

1922

BOGUS

1922

THOM

1922

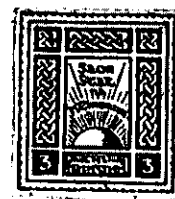
"9" leg slightly short and open. "2" with button tops, which should be slender and pointed. Foot of the "2" s are pointing up straight, they should be slanted.

It would be most interesting to have members opinions on the above, and perhaps an examination of all the Thom Half-Crown stamps in the members collections, may throw more light on this subject.

Bill Kane has prepared the rough sketches of the faulty and genuine letters of the overprint to help in the comparison. These sketches are not to scale.



O'Loughlin, Murphy and Boland essays



BY F. E. DIXON

The Design Committee recently established by the Irish Post Office has led to increased interest in the many designs for definitives submitted in 1922.

Of exceptional interest are the series prepared by the firm of O'Loughlin, Murphy and Boland, at the request of Mr. J. J. Walsh, Minister for Posts & Telegraphs in the first Provisional Government. He had obtained the designs for 1d, 3d, 5d and 7d from an artist whose name has not survived. Designs for 1/2d, 2d, 1/- and 10/- were prepared by William MacBride, well known as a portrait artist and stained-glass worker. He was responsible for many of the Irish revenue stamp designs.

The initial sketches were about 10 x 7" and from them zinc plates were photo-engraved. Stereo moulds were made from these plates and a number of plates (eight in the case of the 1/2d etc.) were cast from each mould. These were then assembled in sufficient number to complete the printing plate which was completed by the same stereo process. The complete plates comprised 32 (4 x 8) impressions for the 1/2d, 2d and 1/-; 18 (3 x 6) for the 7d; and 12 (2 x 6) for the 10/-. We do not know the arrangement of the 1d, 3d and 5d. If any examples survive they are in the archives of Dublin G.P.O. The 1d, 3d and 5d which have been circulating in recent years date only from 1943 when they were produced in sheets of 12 and singly as "die proofs" on a white paper quite different from that of the 1922 printings.

The 1922 paper was thin wove, unwatermarked, 125 x 189 mm. Most of the essays extant are imperforate, but others were roughly line-perf. 11 1/2.

At least five different inks were tried. 1/2d, 2d, 7d and 10/- are all found in two yellows, which I class as "yellow" and "lemon". The lemon does not seem to have been used for the 1/- but the yellow of that value is darker for the top two rows than for the remainder of the sheet. Green (myrtle?) was used for 1/2d, 2d, 7d and 1/-. Carmine-red describes an ink of the 1/2d, 7d, 1/- and 10/-. For the 2d there was instead a chestnut not found with any other value.

For much of the information we are indebted to Colm O'Loughlin, D.Litt., the renowned Irish scholar. He was secretary to the firm in 1922. He later established the Three Candles Press, specialising in high-class book production. There he has been associated with essays for several commemorative stamps, and assisted the artists with the Irish inscriptions, e.g. 1944 "Four Masters" 1/2d and 1/- which were made definitives.

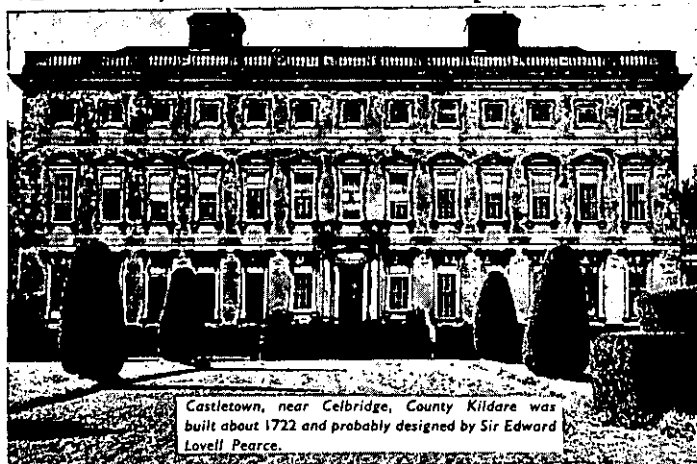
The O'Loughlin, Murphy & Boland essays of 1922 are missing from many otherwise comprehensive Irish collections. None were included in the Marquess of Bute's sale; none in that of J.K. Preston.

The above article was prepared for describing the essays which were contained in the June 1964 Postal Auction No. 2 of the Irish Philatelic Circle and is reprinted for the information of our members. The lots of essays offered in that sale are given herewith since they are the most comprehensive offering in many years.

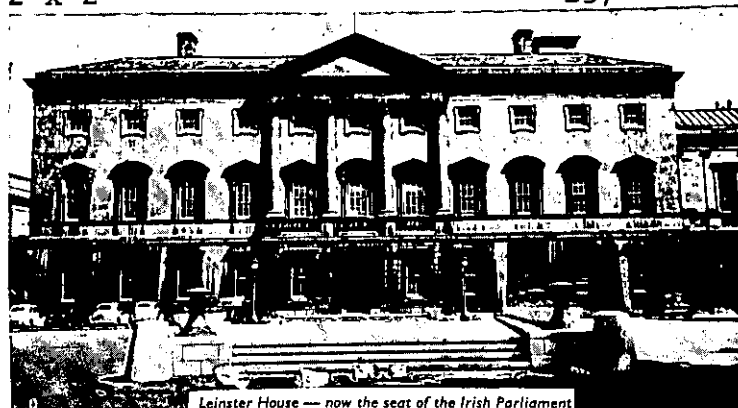
O'LOUGHLIN, MURPHY & BOLAND ESSAYS in POSTAL AUCTION No. 2

Lot No.	Value, etc.	Quantity	Reserves
			Piece Singles
1	1/2d yellow imperf.	Sheet 4 x 8	L 18
2	1/2d yellow imperf.	Sheet 4 x 8 (crease)	L 16
3	1/2d yellow imperf.	Sheet 4 x 8 (stain)	L 15
4	1/2d yellow perf.	4 x 7 (defects)	L 14
5	1/2d lemon imperf.	Sheet 4 x 8 (2 defective)	L 15
6	1/2d lemon imperf.	Sheet 4 x 8 (2 defective)	L 15
7	1/2d lemon imperf.	Sheet 4 x 8 (5 defective)	L 13
8	1/2d lemon perf.	4 x 6	L 13
9	1/2d green imperf.	Sheet 4 x 8 (3 defective)	L 15
10	1/2d green perf.	4 x 5	L 14
11	1/2d red imperf.	4 x 7 (1 defective)	L 20
12	2d yellow imperf.	Sheet 4 x 8	L 18
13	2d yellow imperf.	Sheet 4 x 8 (crease)	L 15
14	2d yellow imperf.	Sheet 4 x 8 (crease)	L 15
15	2d yellow perf.	4 x 6	L 16
16	2d lemon imperf.	Sheet 4 x 8	L 16
17	2d lemon imperf.	Sheet 4 x 8 (defects)	L 15
18	2d lemon imperf.	Sheet 4 x 8 (defects)	L 15
19	2d green imperf.	Sheet 4 x 8 (crease)	L 16
20	2d green perf.	Sheet 4 x 8 (stains)	L 20
21	2d green perf.	Block of 19	
22	2d chestnut imperf.	4 x 7	L 50
23	7d yellow imperf.	Sheet 3 x 6	L 14
24	7d yellow imperf.	Sheet 3 x 6 (crease)	L 13
25	7d yellow imperf.	3 x 3	L 7
26	7d lemon imperf.	Sheet 3 x 6	L 13
27	7d lemon imperf.	3 x 5 (soiled)	L 11
28	7d red imperf.	3 x 3	L 9
29	1/- yellow imperf.	Sheet 4 x 8	L 24
30	1/- yellow imperf.	Sheet 4 x 8	L 24
31	1/- yellow imperf.	Sheet 4 x 8 (crease)	L 22
32	1/- yellow imperf.	4 x 7 (crease)	L 21
33	1/- green imperf.	4 x 5	L 20
34	1/- red imperf.	4 x 4	L 16
35	10/- yellow imperf.	Sheet 2 x 6	L 12
36	10/- yellow imperf.	2 x 5	L 10
37	10/- lemon imperf.	Sheet 2 x 6	L 12
38	10/- lemon imperf.	Sheet 2 x 6 (soiled)	L 10
39	10/- lemon imperf.	2 x 4	L 8
40	10/- red imperf.	Sheet 2 x 6	L 15
41	10/- red imperf.	2 x 2	

1/2



Castletown, near Celbridge, County Kildare was built about 1722 and probably designed by Sir Edward Lovell Pearce.



Leinster House — now the seat of the Irish Parliament was built by Cassels, an architect of German origin who designed some of the finest eighteenth century stone-built private residences.

THE GAELIC ALPHABET

In the production of its postage stamps both the overprints and the definitives, Ireland has used the Gaelic language.

Gaelic speech is an evidence of a polished, cultured and musical nation. It is the purpose of this article to give the basic information on the Gaelic alphabet which will assist the average collector to enjoy more fully the overprints and the commemoratives of Ireland.

The Gaelic alphabet contains seventeen letters. The letter "h" is an additional one added frequently for grammatical reasons before vowels and in foreign names and expressions.

The alphabet is divided into vowels and consonants. The vowels are A, E, I, O, U and the consonants: B, C, D, F, G, L, M, N, P, R, S, and T.

The vowels may be either a "long sound" or a "short sound". If short, there is no accent; if long, an accent mark or short stroke will be placed over such vowel.

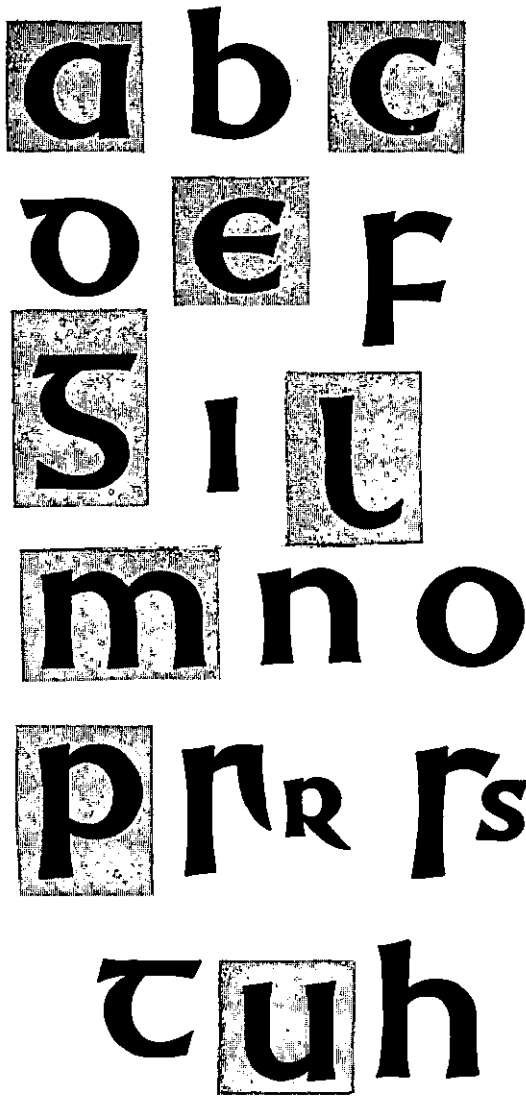
	Short		Long
A	"fat"	Á	"awl"
E	"pet"	É	"there"
I	"pit"	Í	"theme"
O	"pot"	Ó	"score"
U	"put"	Ú	"rule"

The consonants are subject to two types of modification: aspiration or eclipse. Occasionally for the sake of harmony and beauty of sound, certain consonants in relation to vowels would sound harsh and displeasing to the ear. They are modified

by placing a dot above the consonant. This changes the sound into a different sound produced by the same organ of speech. These aspirated consonants are B, C, D, F, G, M, P, S and T.

Euphony or sweetness of sound may also cause certain consonants to be modified in Gaelic by the addition before the first letter consonant another consonant formed by the same organ of speech. This is called an eclipse or a blotting out of the sound. The original consonant remains in the word but its sound is changed to that of the eclipsing letter placed before it. Seven consonants can be eclipsed as follows: the brackets indicate the added consonant [M] B, [G] C, [N] D, [B] F, [N] G, [B] P, [D] T.

A book, "Irish Without Worry For Everyone" by Rev. Father Collier, O.M.I., House of Retreat, Inchicore, Dublin and printed by O'Gorman Ltd of Galway is an excellent one on Gaelic.



Dublin 1959
A modern Gaelic alphabet, designed and cut by Michael Biggs.



POSTAL STATIONERY PACKETS (continued)

4. Lettercards

- 1924 (2d) 10 for 2s.
- 1942 (2½d) 12 for 3s.3d.
- 1953 (3d) 12 for 3s.9d.
- 1959 (3d) 12 for 4s.

5. Wrappers

- 1924 (½d) 21 for 1s.
- 1924 (1d) 22 for 2s.
- 1950 (1½d) 22 for 3s.2½d. (sur-charged on "3/-")
- 1954 (1½d) 24 for 3s.6d.
- 1957 (2d) 24 for 5s.

6. Telegram Forms

Sold in pads of 20 at price of stamps, with 3d added for plain inter-leaving.

N.B. Above prices are based partly on packet wrappings and partly on prices stated in Post Office Guides.

POSTAL STATIONERY STAMPED-TO-ORDER

All types of postal stationery can be stamped for payment of a small fee, under certain conditions, and this has been arranged by many Irish firms. The printing has always been done in the same colour as the post office issues of the time, but not always by the same process. Our knowledge of what has been issued is scanty, and the list below does not claim to be complete and no attempt is made to assign dates.

1. Envelopes. ½d (I), 1d (VII), 1½d (VI), 2d (II) all embossed.
2. Postcards, including those for Printed Paper rate.
 - ½d (I) embossed and (IV) typographed.
 - 1d (VII) and 1½d (VI) both embossed and typographed.
 - 2d (II) embossed
 - 4d (II) blue-green embossed
 - ½d (I) plus 1½d (VI) reply paid both embossed.
 - 1½d (VI) plus 2d (II) reply paid both embossed.
3. Wrappers
 - ½d (I) embossed and (IV) typographed
 - 1d (VII) embossed.
 - 1½d (VI) typographed.
4. Parcels Labels for parcels of literature for the blind.
 - 1d (VII) embossed

RANDOM NOTES
BY F. E. DIXON

O'Loughlin, Murphy & Boland Essays

When I wrote the account of the Essays to accompany the details of the second of Mr. Kane's Postal Auctions I really thought I'd put together all the basic facts. Alas (or should be "Oh Joy.?"?) three days later Dr. O'Loughlin presented to me some of William MacBride's first sketches, notably one for a 9d value which they did not proceed with. They are scribbled on the back of drawings for a motor car that he and Colm O'Loughlin built to take an engine they had acquired. Further examination discloses that the 9d design is that modified into the ½d the emblems used being round tower and harp and wolfhound and horizon sun.

Locals

Has any of our readers an early run of the "Stamp Collectors Fortnightly"? I would like to see the article in No. 483 (1911?) by F.W. Edwards, listed as "Dublin: Stamps and Tokens".

New Postal Rates

The increased impositions of 1st June cause many moans. An interesting feature of the new rates is the reappearance of the odd ½d, e.g. the internal rate for Printed Papers, etc. is 1½d per 2 oz., with minimum 3d.

Special Postmark

Yet again a special cancellation has been used without any warning to the collectors. Fortunately Mr. Keenan did hear about it, and thanks to him I can illustrate the skeleton handstamp of the International Railway Convention held in Dublin last month, from 8th-11th June.



Booklets

Booklet 44-63 is sold out in some post offices and it is likely that the next issue will have a different make-up, with 5d included. A few panes of the 4d with inverted watermark might be a good investment.

NEW ISSUE NOTES AND NEWS.



The special postage stamps to commemorate Ireland's participation in the New York World's Fair were issued on 20th July, 1964.

The stamp which is in two denominations, 5d. (17½ million) and 1s. 5d. (1¼ million) made up in sheets of 120 stamps features the Irish Pavilion at the Fair.

It bears the inscription "Irish Pavilion - New York World's Fair 1964-5", as well as the name of the State "Eire" and the denomination. Printing was by the photogravure process in multicolour on paper watermarked with the letter "e". Perforations 15 x 15.

First Day covers received the special first day of issue mark at the Philatelic Section, General Post Office, Dublin 1 and at Cork, Dún Laoghaire, Galway, Limerick, Waterford and Wexford.

As we go to press, information has been received that a special Europa postage stamp sponsored by the European Conference of Postal and Telecommunications Administrations (CEPT) will be issued by member countries, including Ireland, on September 14th, 1964. The stamp commemorates the fifth anniversary of the founding of CEPT.

The Irish stamp is in two denominations, 8d. (2,500,000) and 1s. 5d. (2,500,000) and is made up in sheets of 120. The basic design is by the French artist, Georges Bétemps and represents the 22 member countries of CEPT in the form of a flower encircling the CEPT monogram. The stamp bears an indication that it commemorates the fifth anniversary of the founding of CEPT and will include the word "Europa", the name of the State and the denomination. Printing is by photogravure in multicolour on paper watermarked with the letter "e". Perforations 15 x 15.

Conditions for servicing first day covers and purchasing instructions are as follows:

(1) First day covers, if received fully addressed and accompanied by a remittance to cover the value of the stamps required, will be serviced by the Controller, Philatelic Section, General Post Office, Dublin 1, and by the Postmasters of Cork, Dún Laoghaire, Galway, Limerick, Waterford and Wexford provided they are received not later than the 5th September. A special first day of issue mark will be impressed on first day covers posted at the offices mentioned.

(2) Official first day covers are not supplied.

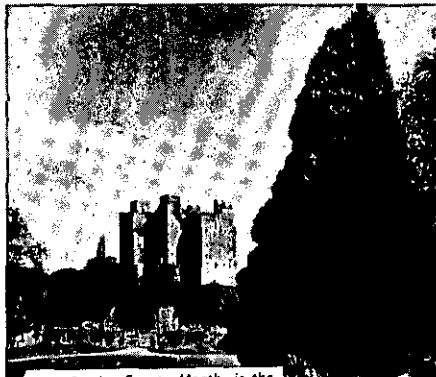
(3) Stamps will be cancelled only when they are affixed to items for transmission through the post.

(4) Payment may be made by Bank Draft or Money Order; stamps are not accepted in payment. The cost of Postage and registration or insurance on packets of stamps will be deducted from the remittance received.

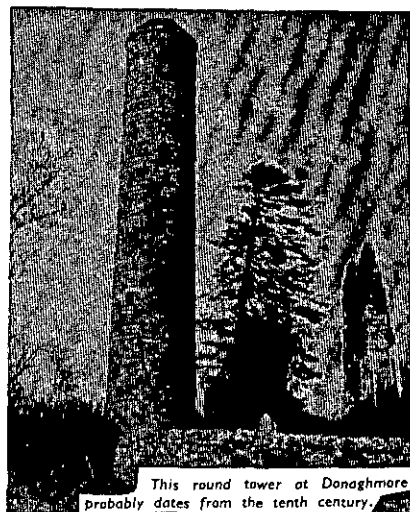
(5) Orders are not sent cash on delivery.



Blarney Castle, County Cork. A few miles outside Cork City, Blarney Castle is known throughout the world for its reputed power to confer the gift of eloquence on those who kiss the famous stone on its battlements.



Trim Castle, County Meath, is the largest Anglo-Norman fortress in Ireland. The moat which could be filled from the River Boyne surrounded the two-acre structure and completed its protection.



This round tower at Donaghmore probably dates from the tenth century.